

**COMMERCIAL SPACE**  
 Total Square Footage all Floors = 52,398 s.f.

The undersigned hereby certifies that the floor plans herein are representative copies of portions of the plans of the building as filed with and approved by the municipal or governmental subdivision having jurisdiction over the issuance of permits for the construction of buildings, and that the floor plans herein show the layout, location, unit numbers, and dimensions of the units.

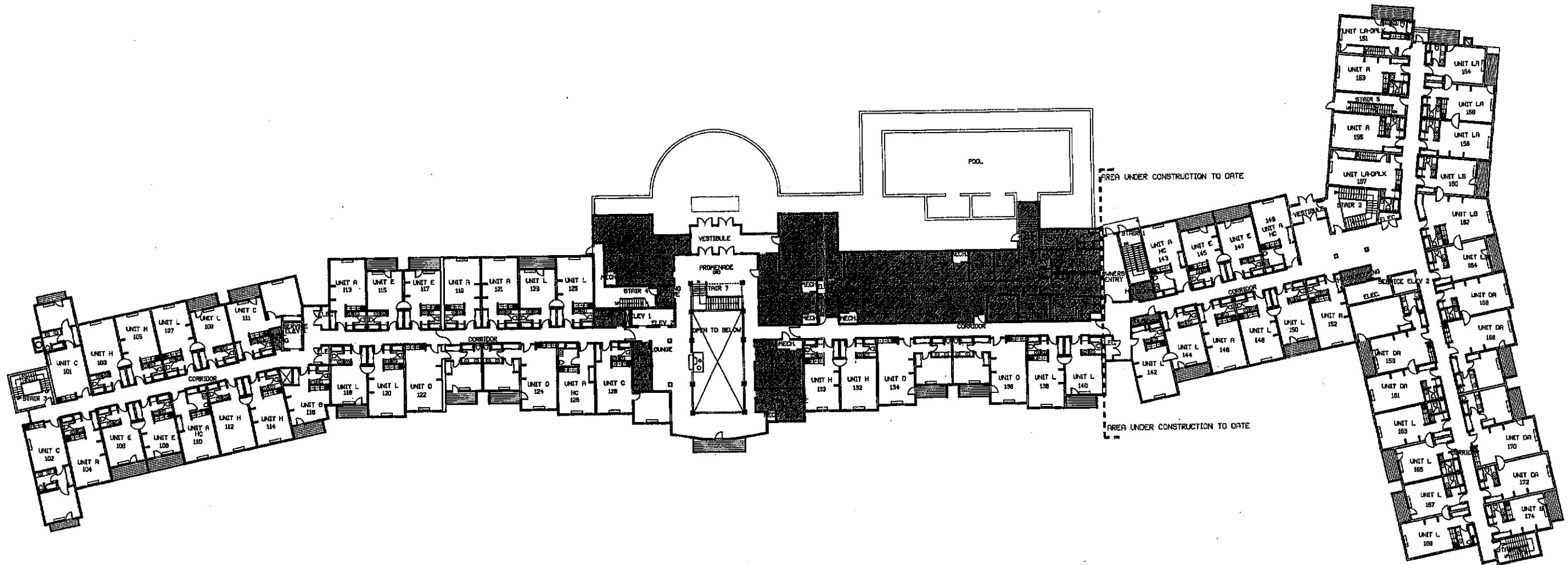
James H. Symes, Jr.  



**GRAND SUMMIT RESORT  
 AND CONFERENCE CENTER  
 AT MOUNT SNOW**  
 DOVER, VT

JSA Inc Architects Planners  
 381 Hanover Street  
 Portsmouth, NH 03801  
 603 436 2551

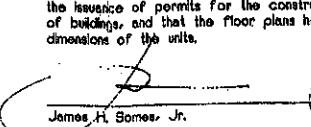
Grand Summit Resort Hotel  
 and Conference Center  
 at Mount Snow Vermont  
 Date: February 23, 1988

Scale: 1" = 20'-0"



 COMMERCIAL SPACE

The undersigned hereby certifies that the floor plans herein are representative copies of portions of the plans of the building as filed with and approved by the municipal or governmental subdivision having jurisdiction over the issuance of permits for the construction of buildings, and that the floor plans herein dimensions of the units.

  
James H. Gomez, Jr.

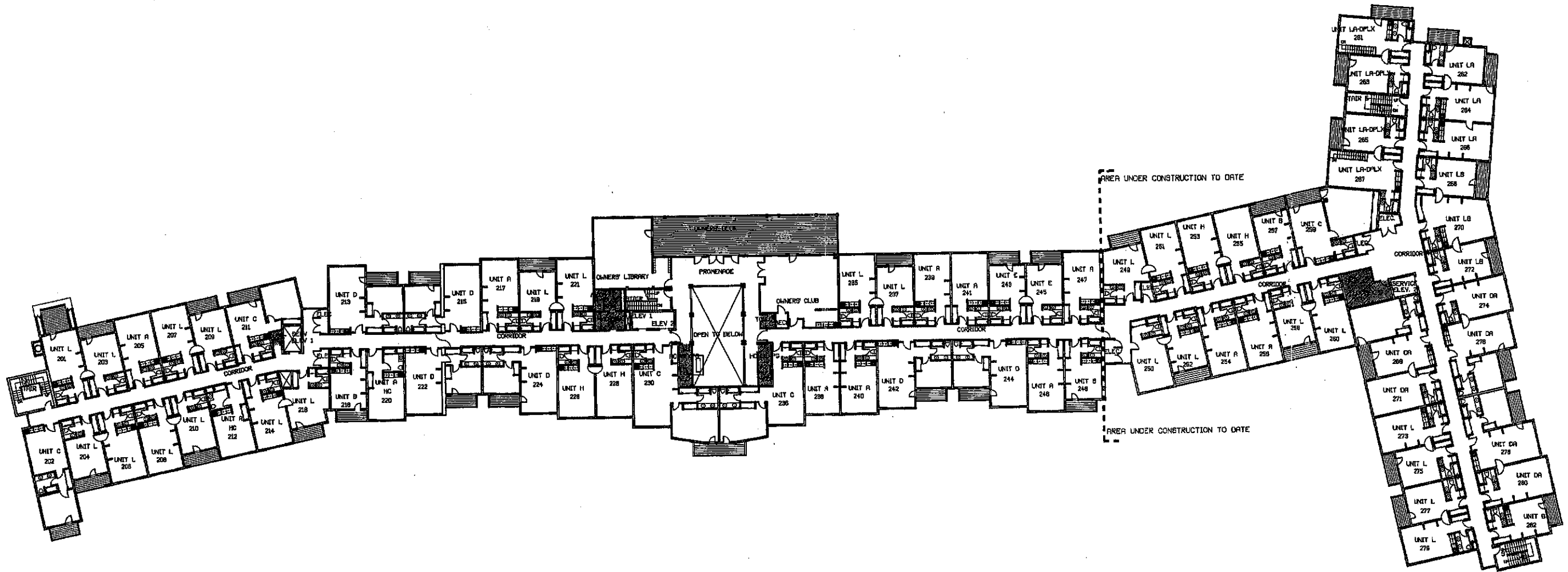


GRAND SUMMIT RESORT HOTEL  
AND CONFERENCE CENTER  
AT MOUNT SNOW  
DOVER, VT

JSA Inc Architects Planners  
351 Hanover Street  
Portsmouth, NH 03801  
603 438 2551

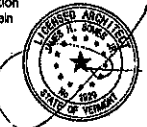
Grand Summit Resort Hotel  
and Conference Center  
at Mount Snow, Vermont  
Date: February 23, 1988

Scale 1" = 20'-0"



COMMERCIAL SPACE

The undersigned hereby certifies that the floor plans herein are representative copies of portions of the plans of the building as filed with and approved by the municipal or governmental subdivision having jurisdiction over the issuance of permits for the construction of buildings, and that the floor plans herein show the layout/location, unit numbers.

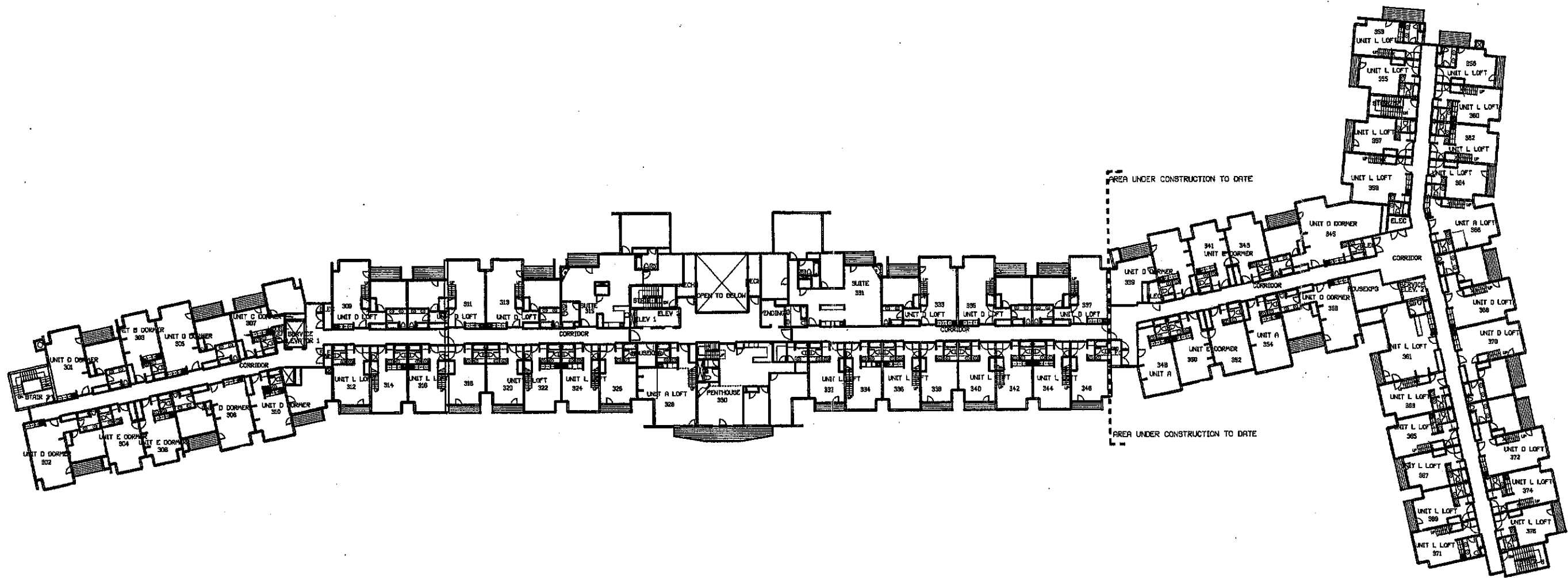
James H. Somes, Jr.  


GRAND SUMMIT RESORT HOTEL  
 AND CONFERENCE CENTER  
 AT MOUNT SNOW  
 DOVER, VT

JSA Inc Architects Planners  
 361 Hanover Street  
 Portsmouth, NH 03801  
 603 436 2551

Grand Summit Resort Hotel  
 and Conference Center  
 at Mount Snow, Vermont  
 Date: February 23, 1998

Scale 1" = 20'-0"




 COMMERCIAL SPACE

The undersigned hereby certifies that the floor plans herein are representative copies of portions of the plans of the building as filed with and approved by the municipal or governmental subdivision having jurisdiction over the issuance of permits for the construction of buildings, and that the floor plans herein show the layout, location, unit numbers, and dimensions of the units.

James H. Gomez, Jr.

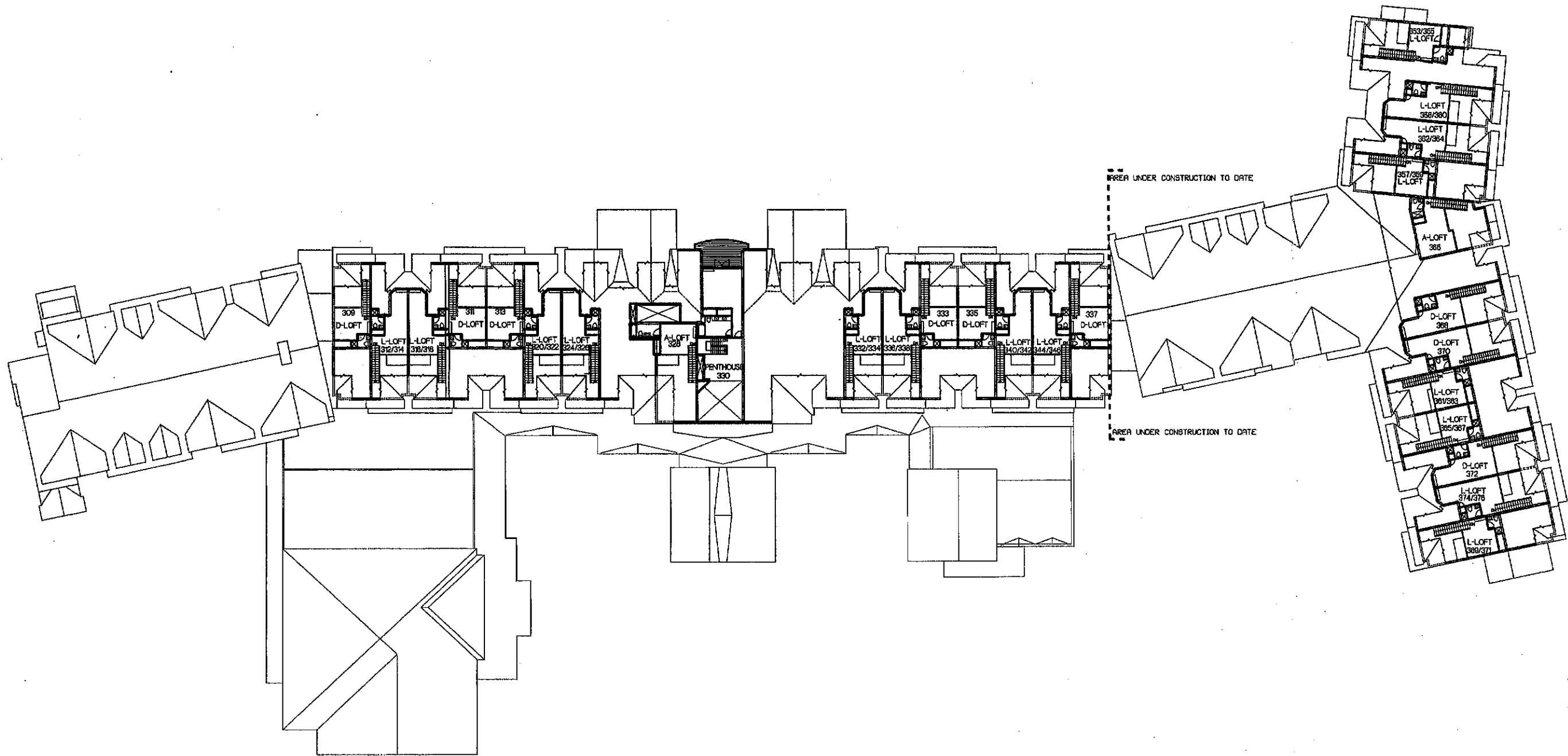


**GRAND SUMMIT RESORT HOTEL  
AND CONFERENCE CENTER  
AT MOUNT SNOW  
DOVER, VT**

JSA Inc Architects Planners  
381 Hanover Street  
Portsmouth, NH 03801  
603 436 2551

Grand Summit Resort Hotel  
and Conference Center  
at Mount Snow, Vermont  
Date: February 23, 1988

Scale 1" = 20'-0"




**GRAND SUMMIT RESORT HOTEL  
AND CONFERENCE CENTER  
AT MOUNT SNOW  
DOVER, VT**

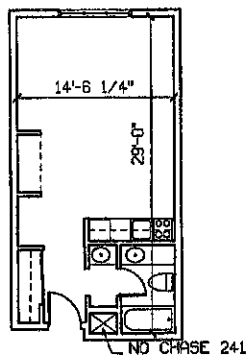
JSA Inc Architects Planners  
361 Hanover Street  
Portsmouth, NH 03801  
603 438 2551

Grand Summit Resort Hotel  
and Conference Center  
at Mount Snow, Vermont  
Date: February 23, 1998

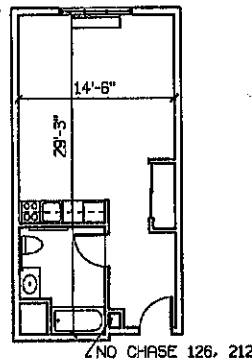
The undersigned hereby certifies that the floor plans herein are representative copies of portions of the plans of the building as filed with and approved by the municipal or governmental subdivision having jurisdiction over the issuance of permits for the construction of buildings, and that the floor plans herein show the layout, location, unit numbers, and dimensions of the units.

James H. Somes, Jr.  


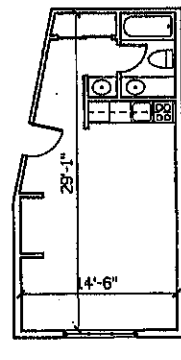
Scale 1" = 20'-0"



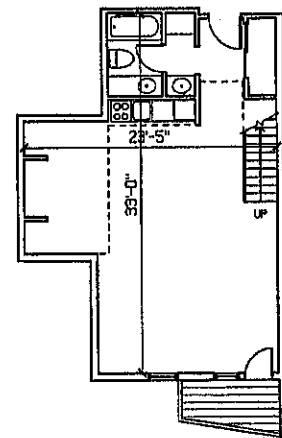
**UNIT A** 407 SQ. FT.  
UNITS:  
104, 113, 119, 121, 146\*,  
152\*, 153\*, 155\*, 205, 217,  
298, 299, 240, 241, 248,  
247, 254\*, 256\*, 354\*



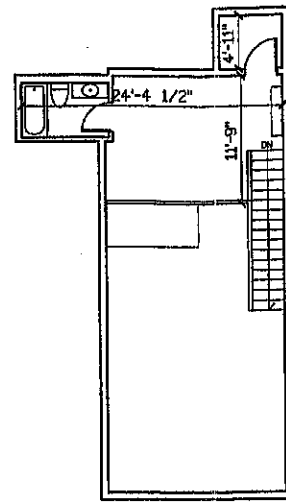
**UNIT A** 421 SQ. FT.  
**(accessible unit)**  
UNITS:  
110, 126, 143\*, 149\*,  
212, 220



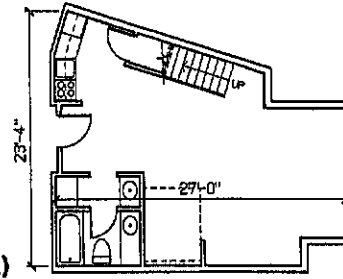
**UNIT A** 394 SQ. FT.  
UNITS:  
348\*



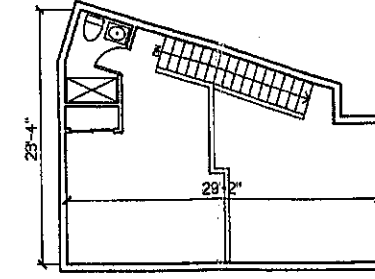
**UNIT A-LOFT (lower level)**  
UNIT:  
328



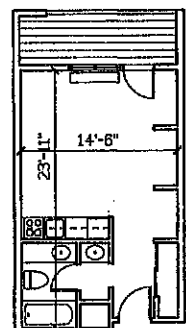
**UNIT A-LOFT (UPPER LEVEL)**  
UNIT:  
328



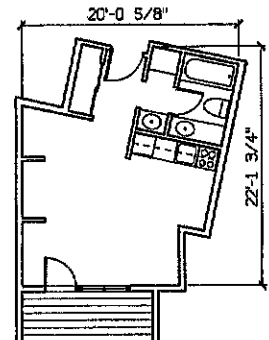
**UNIT A-LOFT (lower level)**  
UNIT:  
366\*



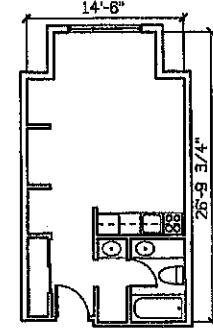
**UNIT A-LOFT (UPPER LEVEL)**  
UNIT:  
366\*



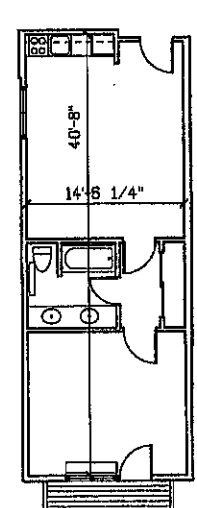
**UNIT B** 352 SQ. FT.  
UNIT:  
174\*, 218 (mir.), 248,  
257\*, 282\*



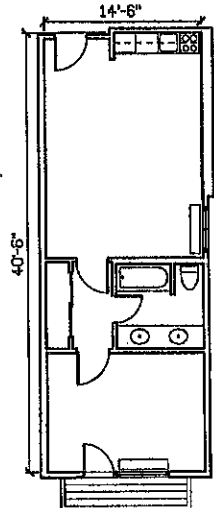
**UNIT B** 351 SQ. FT.  
UNITS:  
116



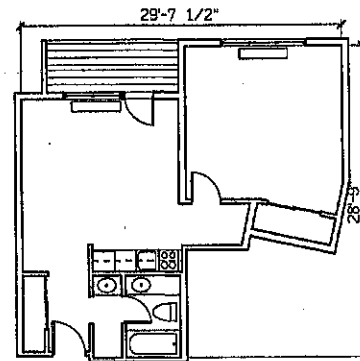
**UNIT B-DORMER**  
UNIT:  
303



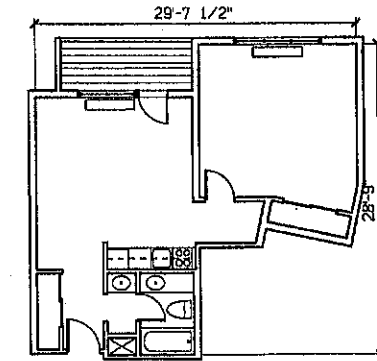
**UNIT-C** 589 SQ. FT.  
UNITS:  
102, 202



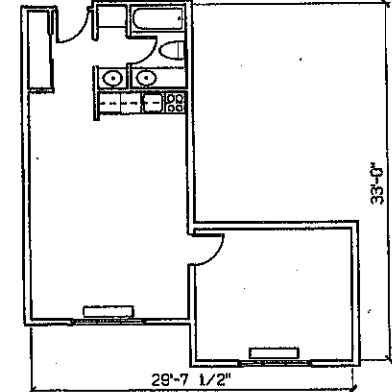
**UNIT-C** 594 SQ. FT.  
UNITS:  
101



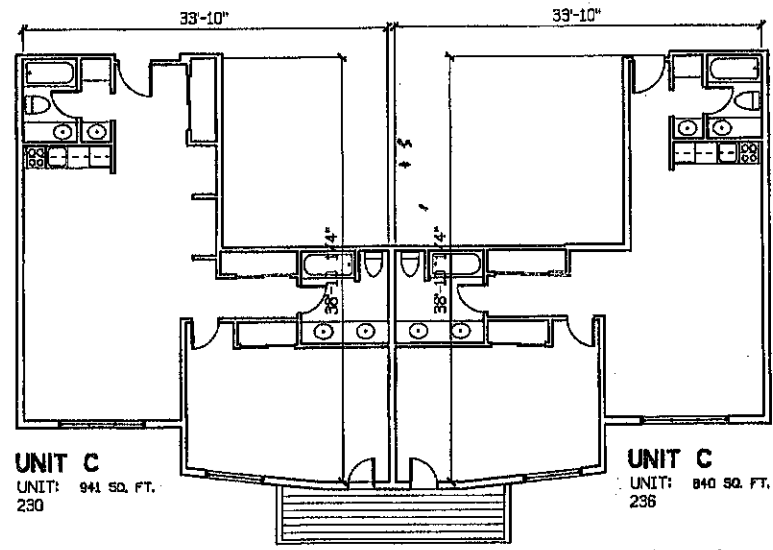
**UNIT-C** 608 SQ. FT.  
UNITS:  
111



**UNIT-C** 599 SQ. FT.  
UNITS:  
211

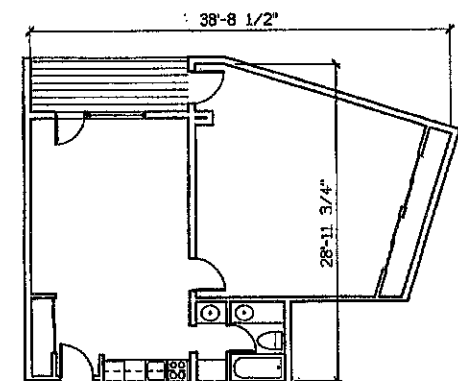


**UNIT-C** 601 SQ. FT.  
UNIT:  
128

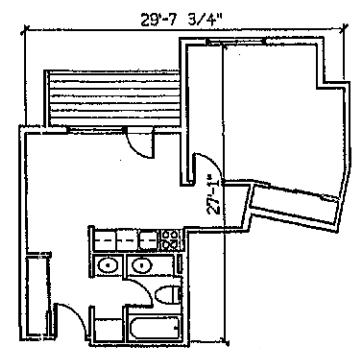


**UNIT C**  
UNIT:  
941 SQ. FT.  
230

**UNIT C**  
UNIT:  
840 SQ. FT.  
236



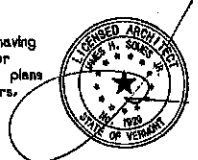
**UNIT C** 822 SQ. FT.  
UNIT:  
259\*



**UNIT C DORMER**  
UNIT:  
307

\* UNITS UNDER CONSTRUCTION TO DATE James H. Somes, Jr.

The undersigned hereby certifies that the floor plans herein are representative copies of portions of the plans of the building as filed with and approved by the municipal or other governmental subdivision having jurisdiction over the issuance of permits for the construction of buildings, and the floor plans herein show the layout, location, unit numbers, and dimensions of the units.

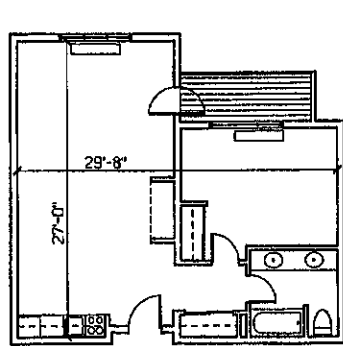


**GRAND SUMMIT RESORT HOTEL AND CONFERENCE CENTER AT MOUNT SNOW**  
DOVER, VERMONT

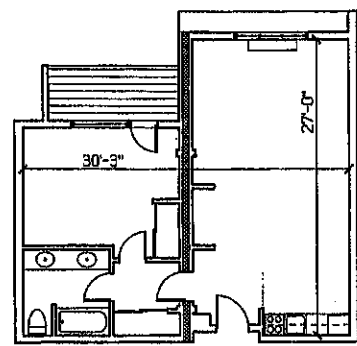
JSA Inc Architects Planners  
361 Hanover Street  
Portsmouth, NH 03801  
603 436 2551

Grand Summit Resort Hotel and Conference Center  
at Mount Snow, Vermont  
Date: February 23, 1998

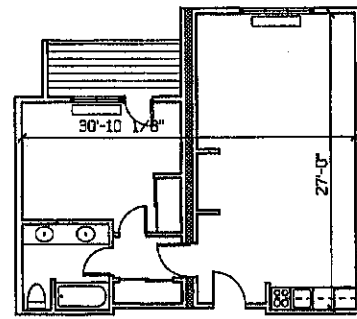
Scale 1/8" = 1'-0"



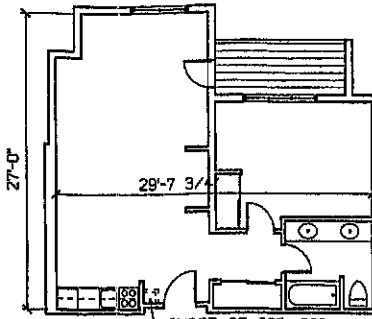
**UNIT D** 673 SQ. FT.  
UNITS:  
124, 136, 213, 224, 242, 244



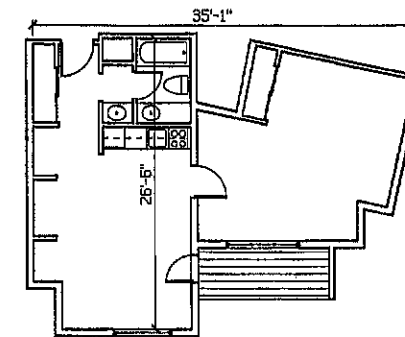
**UNIT D** 680 SQ. FT.  
UNITS:  
134



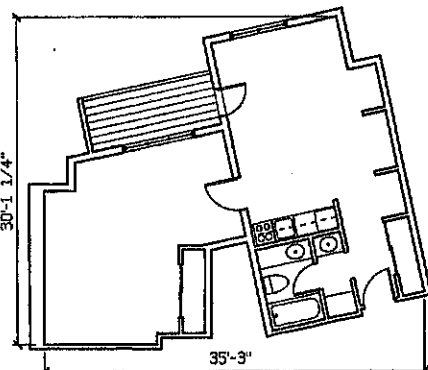
**UNIT D FIREWALL** 787 SQ. FT.  
UNIT:  
122, 215, 222



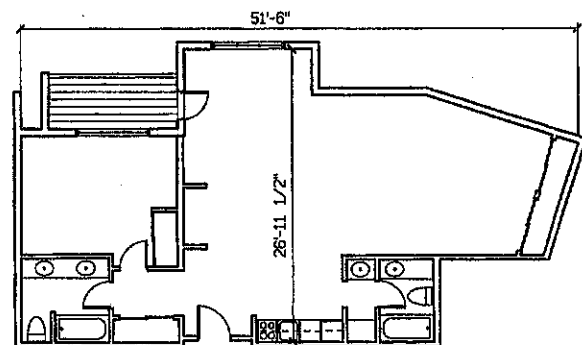
**UNIT D-DORMER** 671 SQ. FT.  
UNITS:  
301, 302, 305, 308, 356\*



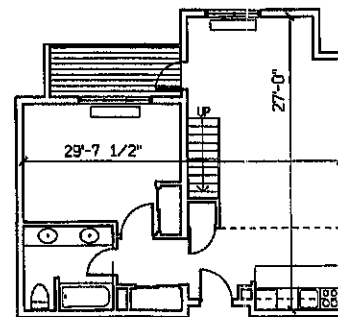
**UNIT D-DORMER** 641 SQ. FT.  
UNITS:  
310



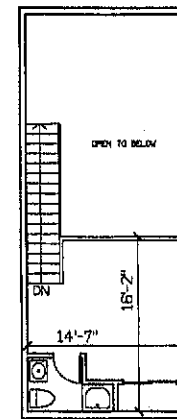
**UNIT D-DORMER** 682 SQ. FT.  
UNIT:  
339\*



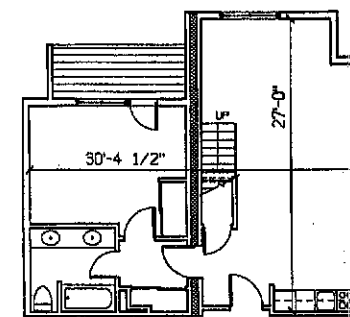
**UNIT D-DORMER** 1065 SQ. FT.  
UNIT:  
345\*



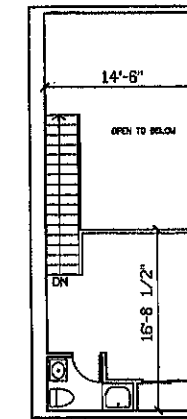
**UNIT D-LOFT (lower level)** 878 SQ. FT.(TOTAL)  
UNITS:  
309, 313, 333, 335, 337, 369\*, 370\*, 372\*



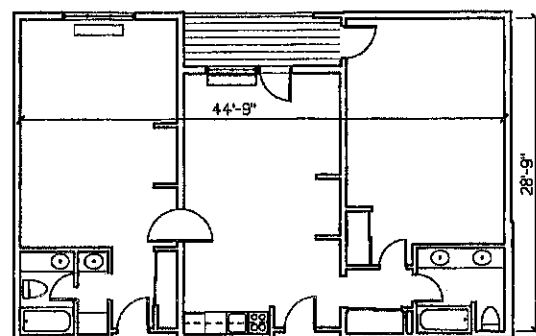
**UNIT D-LOFT (upper level)**



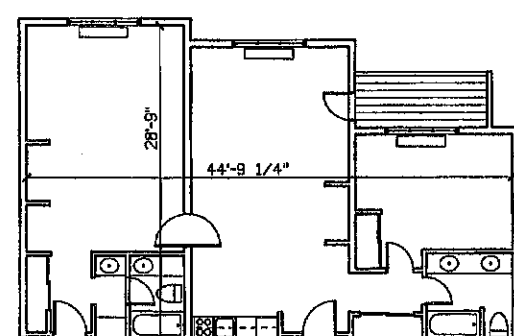
**UNIT D-LOFT** 814 SQ. FT.  
UNIT:  
311



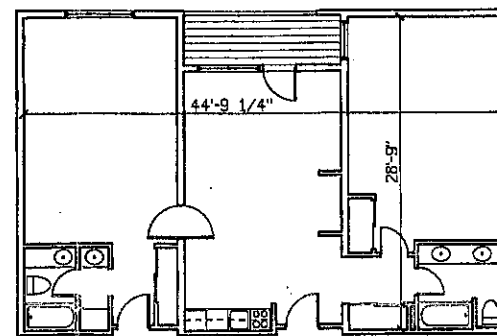
**UNIT D-LOFT (upper level)**  
UNIT:  
311



**UNIT DA** 1207 SQ. FT.  
UNITS:  
159/161\*



**UNIT DA** 1098 SQ. FT.  
UNITS:  
166/168\*, 170/172\*, 274/276\*, 278/280\*



**UNIT DA** 1200 SQ. FT.  
UNITS:  
269/271\*

The undersigned hereby certifies that the floor plans herein are representative copies of portions of the plans of the building as filed with and approved by the municipal or other governmental subdivision having jurisdiction over the issuance of permits for the construction of buildings, and the floor plans herein show the layout, location, unit numbers, and dimensions of the units.



James H. Some, Jr.

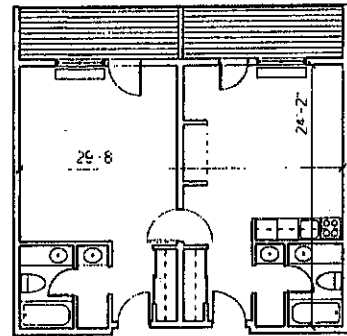
\* UNITS UNDER CONSTRUCTION TO DATE

**GRAND SUMMIT RESORT HOTEL AND CONFERENCE CENTER AT MOUNT SNOW**  
DOVER, VERMONT

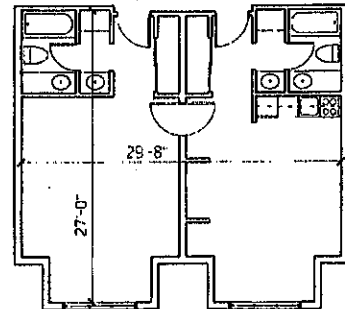
JSA Inc Architects Planners  
361 Hanover Street  
Portsmouth, NH 03801  
603 436 2551

Grand Summit Resort Hotel and Conference Center  
at Mount Snow, Vermont  
Date: February 23, 1998

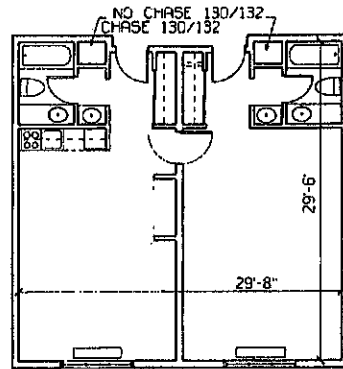
Scale 1/8" = 1'-0"



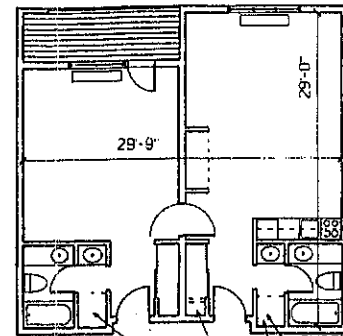
**UNIT E** 709 SQ. FT.  
 UNITS:  
 106/108, 115/117, 145/147\*, 243/245



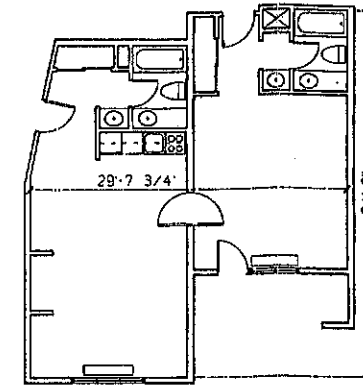
**UNIT E-DORMER** 745 SQ. FT.  
 UNITS:  
 304/306, 341/343\*, 350/352\*



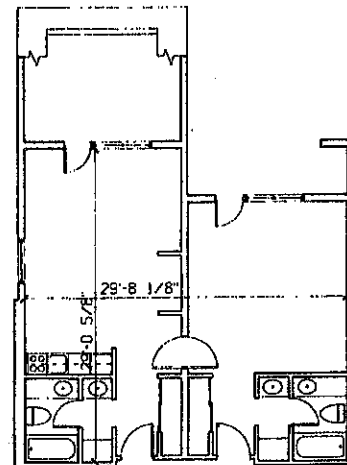
**UNIT H** 846 SQ. FT.  
 UNITS:  
 103/105, 112/114, 130/132, 226/228, 253/255\*



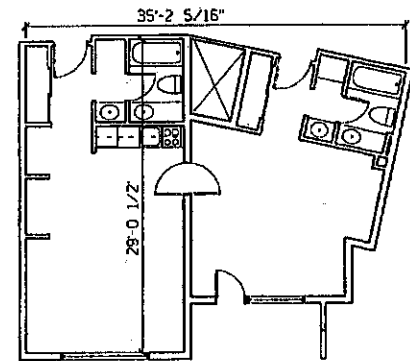
**UNIT L** 771 SQ. FT.  
 UNITS:  
 107/109, 118/120, 123/125, 138/140, 148/150\*, 163/165\*, 167/169\*, 204/206, 207/209, 208/210, 219/221, 235/237, 258/260\*, 273/275\*, 277/279\*



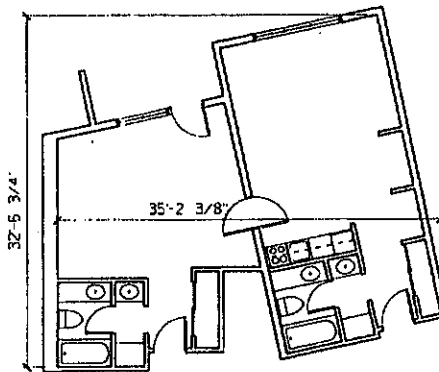
**UNIT L** 775 SQ. FT.  
 UNITS:  
 142/144



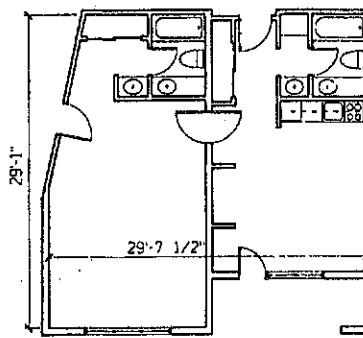
**UNIT L** 778 SQ. FT.  
 UNITS:  
 201/203



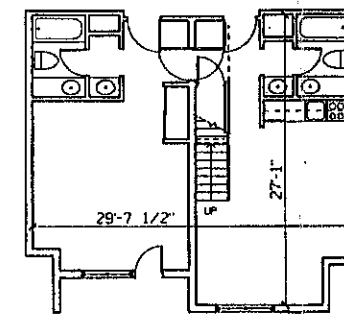
**UNIT L** 780 SQ. FT.  
 UNITS:  
 214/216



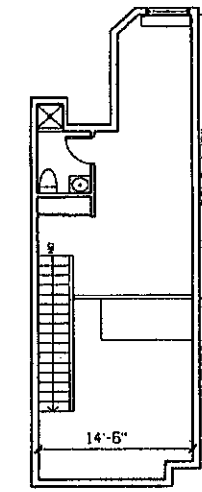
**UNIT L** 781 SQ. FT.  
 UNITS:  
 249/251\*



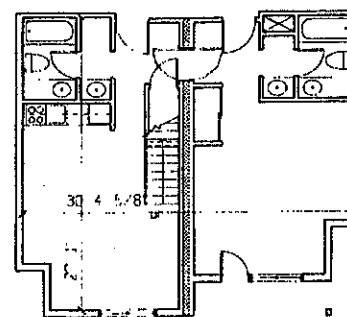
**UNIT L** 754 SQ. FT.  
 UNITS:  
 250/252\*



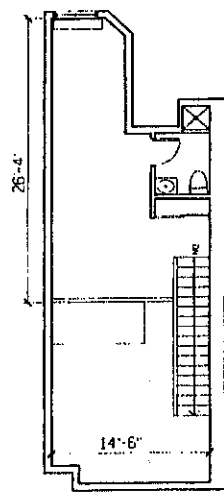
**UNIT L-LOFT (lower level)** 1008 SQ. FT. (TOTAL)  
 UNITS:  
 312/314, 320/322, 324/326, 336/338, 340/342, 344/346, 358/360\*, 362/364\*, 374/376\*



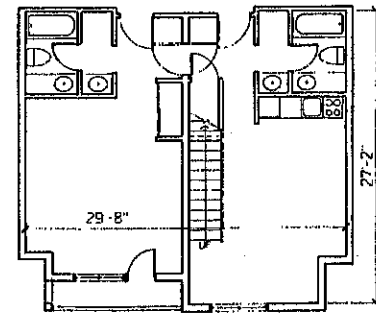
**UNIT L-LOFT (upper level)**  
 UNITS:  
 314, 322, 324, 336, 342, 344, 360\*, 362\*, 374\*



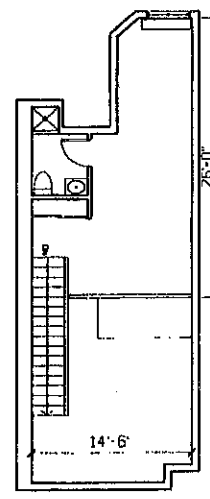
**UNIT L-LOFT (lower level)** 1026 SQ. FT.  
 UNITS:  
 351/353



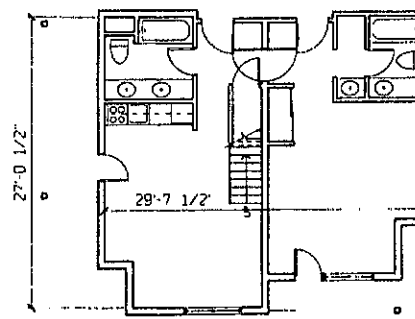
**UNIT L-LOFT (upper level)**  
 UNITS:  
 352/354



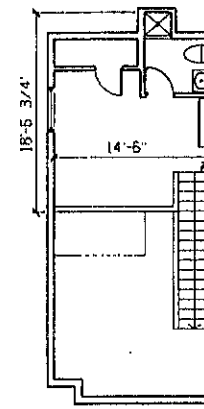
**UNIT L-LOFT (lower level)** 1027 SQ. FT. (TOTAL)  
 UNITS:  
 352/354



**UNIT L-LOFT (upper level)**  
 UNITS:  
 353/355\*

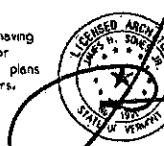


**UNIT L-LOFT (lower level)** 947 SQ. FT. (TOTAL)  
 UNITS:  
 353/355\*



**UNIT L-LOFT (upper level)**  
 UNITS:  
 353\*

The undersigned hereby certifies that the floor plans herein are representative copies of portions of the plans of the building as filed with and approved by the municipal or other governmental subdivision having jurisdiction over the issuance of permits for the construction of buildings, and the floor plans herein show the layout, location, unit numbers, and dimensions of the units.



UNITS UNDER CONSTRUCTION TO DATE: James H. Somes, Jr.

**GRAND SUMMIT RESORT HOTEL AND CONFERENCE CENTER AT MOUNT SNOW**

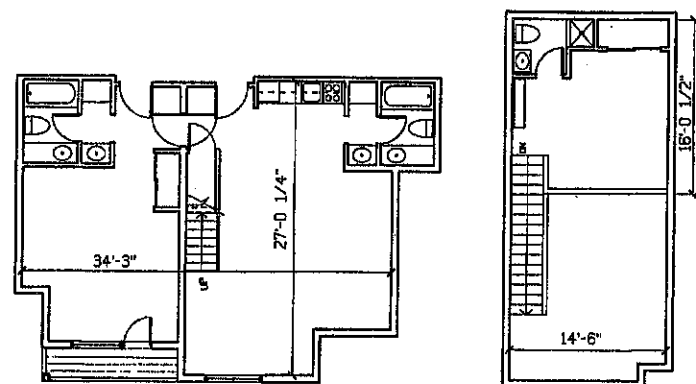
DOVER, VERMONT

JSA Inc Architects Planners  
 361 Hanover Street  
 Portsmouth, NH 03801  
 603 436 2551

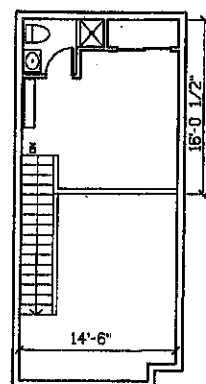
Grand Summit Resort Hotel and Conference Center  
 at Mount Snow, Vermont  
 Date: February 23, 1998

Scale

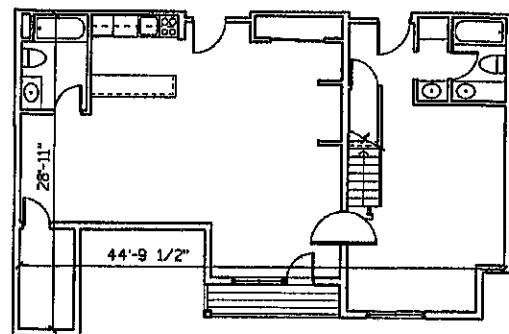




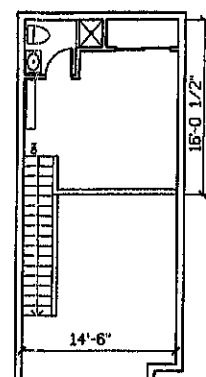
**UNIT L-LOFT** 1080 SQ. FT.(TOTAL)  
(lower level)  
UNITS:  
357/359\*



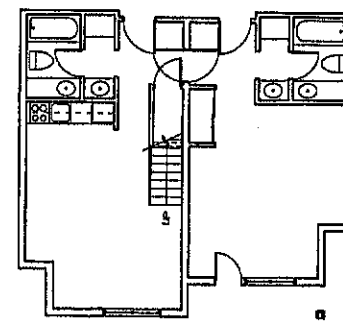
**UNIT L-LOFT**  
(upper level)  
UNITS:  
359\*



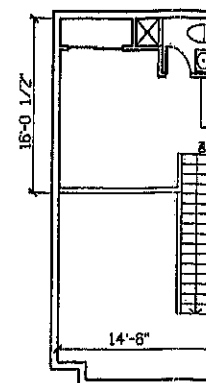
**UNIT L-LOFT** 1285 SQ. FT.(TOTAL)  
(lower level)  
UNITS:  
361/363\*



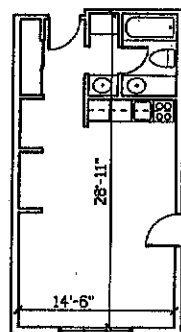
**UNIT L-LOFT**  
(upper level)  
UNITS:  
363\*



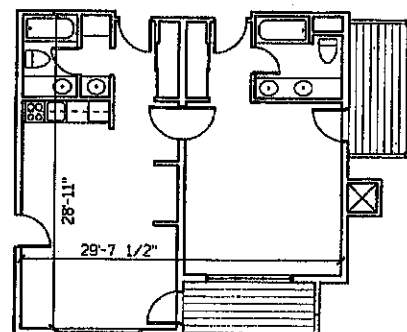
**UNIT L-LOFT** 847 SQ. FT.(TOTAL)  
(lower level)  
UNITS:  
365/367\*, 369/371\*



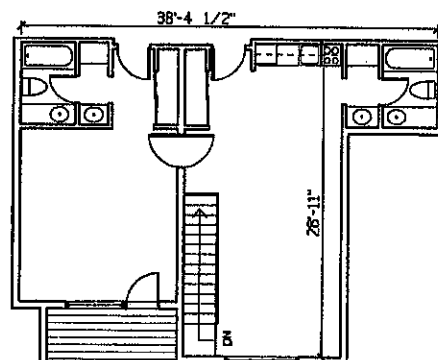
**UNIT L-LOFT**  
(upper level)  
UNITS:  
365\*, 371\*



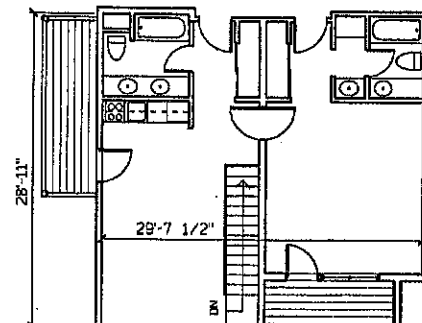
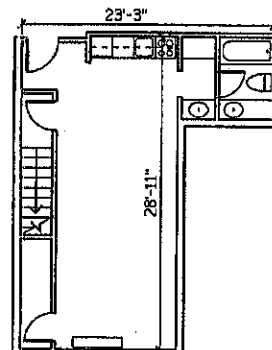
**UNIT A** 1202 SQ. FT.  
UNIT:  
265\*



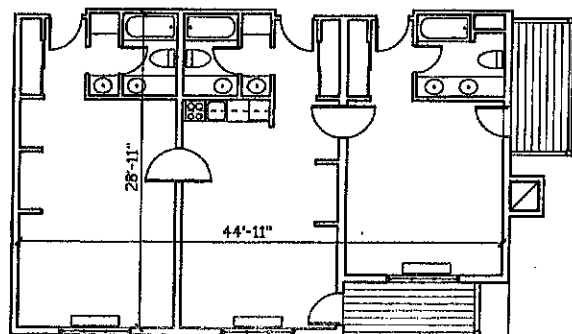
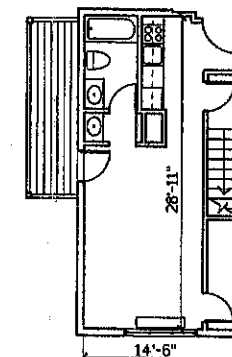
**UNIT L** 1202 SQ. FT.  
UNITS:  
262/264\*



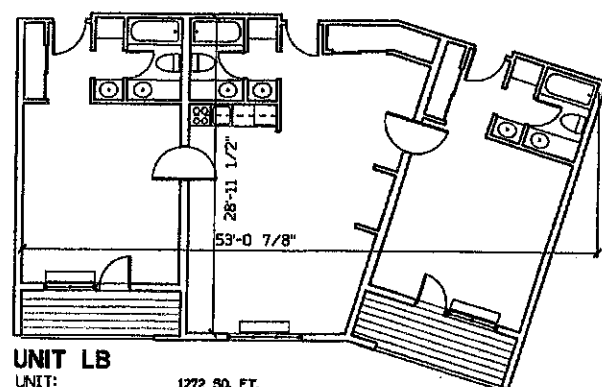
**UNIT LA-DUPLEX** 1929 SQ. FT.(TOTAL)  
UNITS:  
157/265/267\*



**UNIT LA-DUPLEX** 1184 SQ. FT.(TOTAL)  
UNITS:  
151/261/263\*



**UNIT LA** 1206 SQ. FT.  
UNITS:  
154/156/158\*



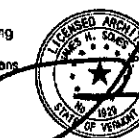
**UNIT LB** 1272 SQ. FT.  
UNIT:  
160/162/164\*, 268/270/272\*

**GRAND SUMMIT RESORT HOTEL  
AND CONFERENCE CENTER  
AT MOUNT SNOW**  
DOVER, VERMONT

JSA Inc Architects Planners  
381 Hanover Street  
Portsmouth, NH 03801  
603 436 2551

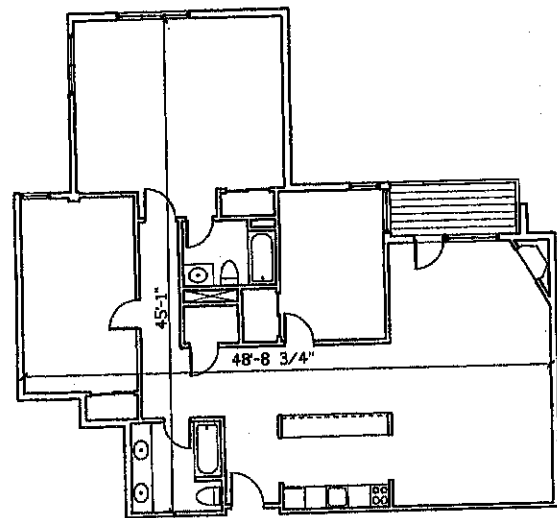
Grand Summit Resort Hotel  
and Conference Center  
at Mount Snow, Vermont  
Date: February 23, 1998

The undersigned hereby certifies that the floor plans herein are representative copies of portions of the plans of the building as filed with and approved by the municipal or other governmental subdivision having jurisdiction over the issuance of permits for the construction of buildings, and the floor plans herein show the layout, location, unit numbers and dimensions of the units.

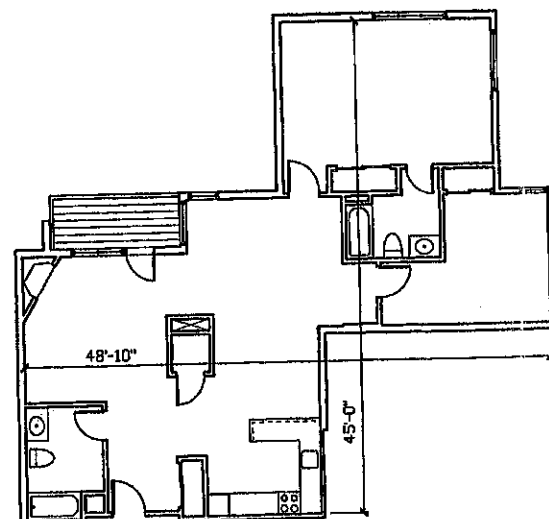


\* UNITS UNDER CONSTRUCTION TO DATE James H. Some, Jr.

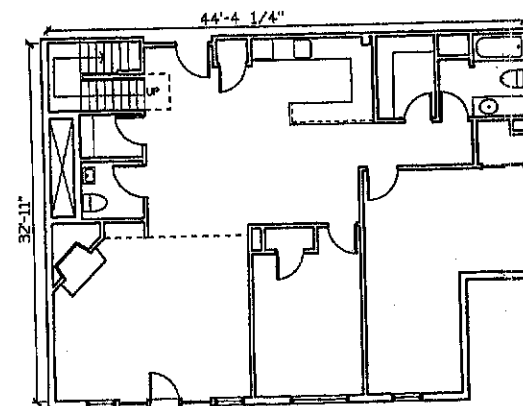
Scale 1/8" = 1'-0"



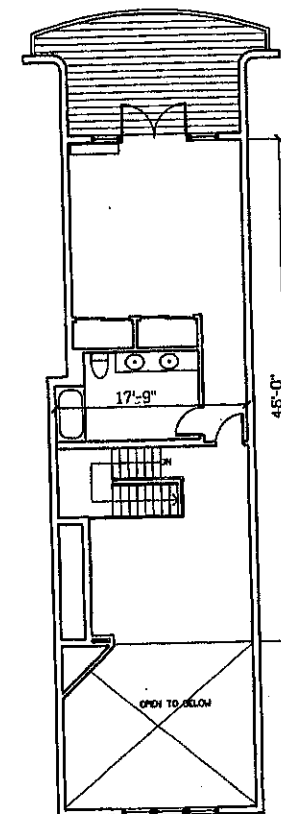
**SUITE** 1546 SQ. FT.  
UNIT:  
331



**SUITE** 1271 SQ. FT.  
UNIT:  
315



**PENTHOUSE** 2049 SQ. FT.(TOTAL)  
(lower level)  
UNIT:  
330



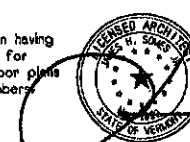
**PENTHOUSE LOFT** 45'-0"  
(upper level)  
UNIT:  
330

**GRAND SUMMIT RESORT HOTEL  
AND CONFERENCE CENTER  
AT MOUNT SNOW**  
DOVER, VERMONT

JSA Inc Architects Planners  
361 Hanover Street  
Portsmouth, NH 03801  
603 436 2551

Grand Summit Resort Hotel  
and Conference Center  
at Mount Snow, Vermont  
Date: February 23, 1998

The undersigned hereby certifies that the floor plans herein are representative copies of portions of the plans of the building as filed with and approved by the municipal or other governmental subdivision having jurisdiction over the issuance of permits for the construction of buildings, and the floor plans herein show the layout, location, unit numbers, and dimensions of the units.



James H. Somes, Jr.

• UNITS UNDER CONSTRUCTION TO DATE

Scale 1/8" = 1'-0"